



ACRON ELEVATORS INDIA

B-64, Tej Kumar Plaza, Opp. Darul Shafa, Hazratganj, Lucknow-226001 ,
Ph.: 0522-4082591, 2202713 | Mob.: 9450854627, 9452317163 274402
E-mail: info@acronelevators.com | www.acronelevators.com

Branch Office: Narripur Mathiya Piprasi
Kushinagr, U.P. Mob.: 9839091740

National Free & Service Hotline

1800-2021-211



PASSENGER ELEVATOR

This publication is for general informational purposes and we reserve the right at any time to alter product design and specification.
No statement it contains should be construed as a warranty or condition, express or implied, as to any product, its fitness for any particular purpose or quality, or any modifications or representation of the terms of any purchase agreement.



ACRON ELEVATOR INDIA

ENJOY THE TECHNOLOGY AND CERATE THE FUTURE

ACRON passenger elevator
Core parts create model of elevator with superior quality
Intelligent science and technology create beauty of life elevator
Green idea leads tendency of energy conservation



SERVICE SYSTEM

ACRON intelligent elevator overall after-sale service is extension of quality elevator, it inherits top level service management system and standard, and carry out profession, detail to each procedure till maintenance, making you feel about superior quality of ACRON



Sincere "sunshine"warranty channel

It establishes multichannel repair & maintenance control system. It ensures good quality and high efficiency of repair and maintenance like radiating range of the Sun.



Promise a "true" letter of commitment

ACRON formulates letter of commitment to the elevator repair & maintenance to ensure the perfect services.



Sincere "sweet" repair and maintenance actions

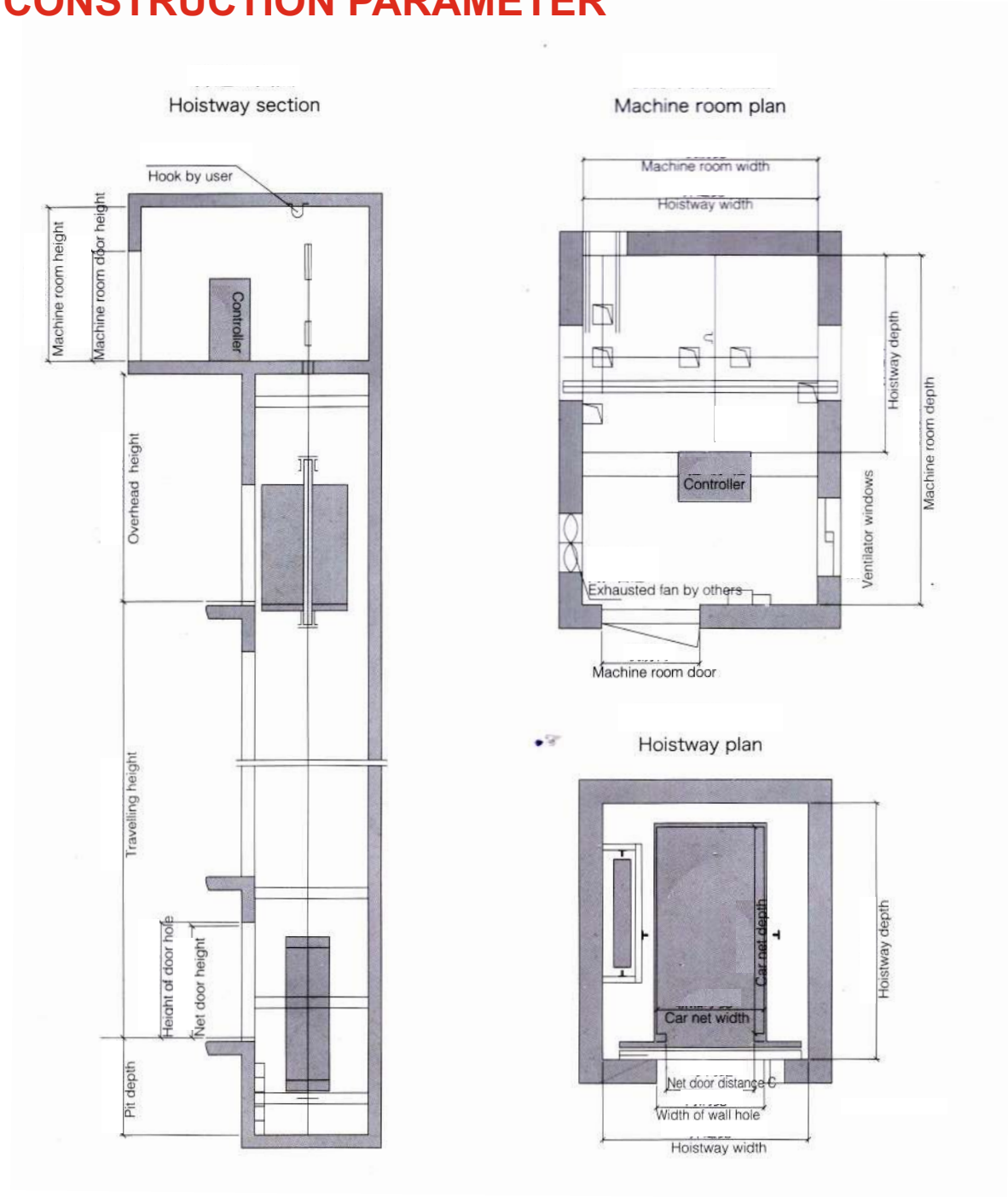
Regarding large and medium repair Items, MAYFORD will assign special peoele for regular test and maintenance. It removes the trouble before it actually happens.



Prompt - it "promptly" arrives at the site.

24-hour all-weather services grant us to arrive at repair & maintenance site within half an hour from your reporting of the trouble.

STRETCHER ELEVATOR
CONSTRUCTION PARAMETER



Loading (kg)	Speed (m/s)	Car size	Door opening size	Hoistway size	Machine room size	(mm) Top Floor height	(mm) Pit depth
		Inner size AXB	C Net door-opening	Widht x depth	Widht x depth		
1000	1.0	1100x2100	900	2100x2600	2100x4000	4500	1500
	1.5					4600	1600
	1.75					4700	1700
	2.0			2200x2600	2200x4000	4900	2000
	2.5					5500	2500

Note : Only for reference, final manufacture please follow contract.

The gentleman bring romance to happy ending. ACRON people kindly shoulder the travel undertaking, the bounden duty of environmental protection. It safely and smoothly produces the first-class products with fine energy-saving and environmental protection. It warmly and sincerely serves vast clients by the considerate attitude. Therefore extensive friends and customers can fully enjoy the comfortable travel of ACRON elevators.

INTERNET + ELEVATOR HIGH-END BRAND

Industrial upgrading

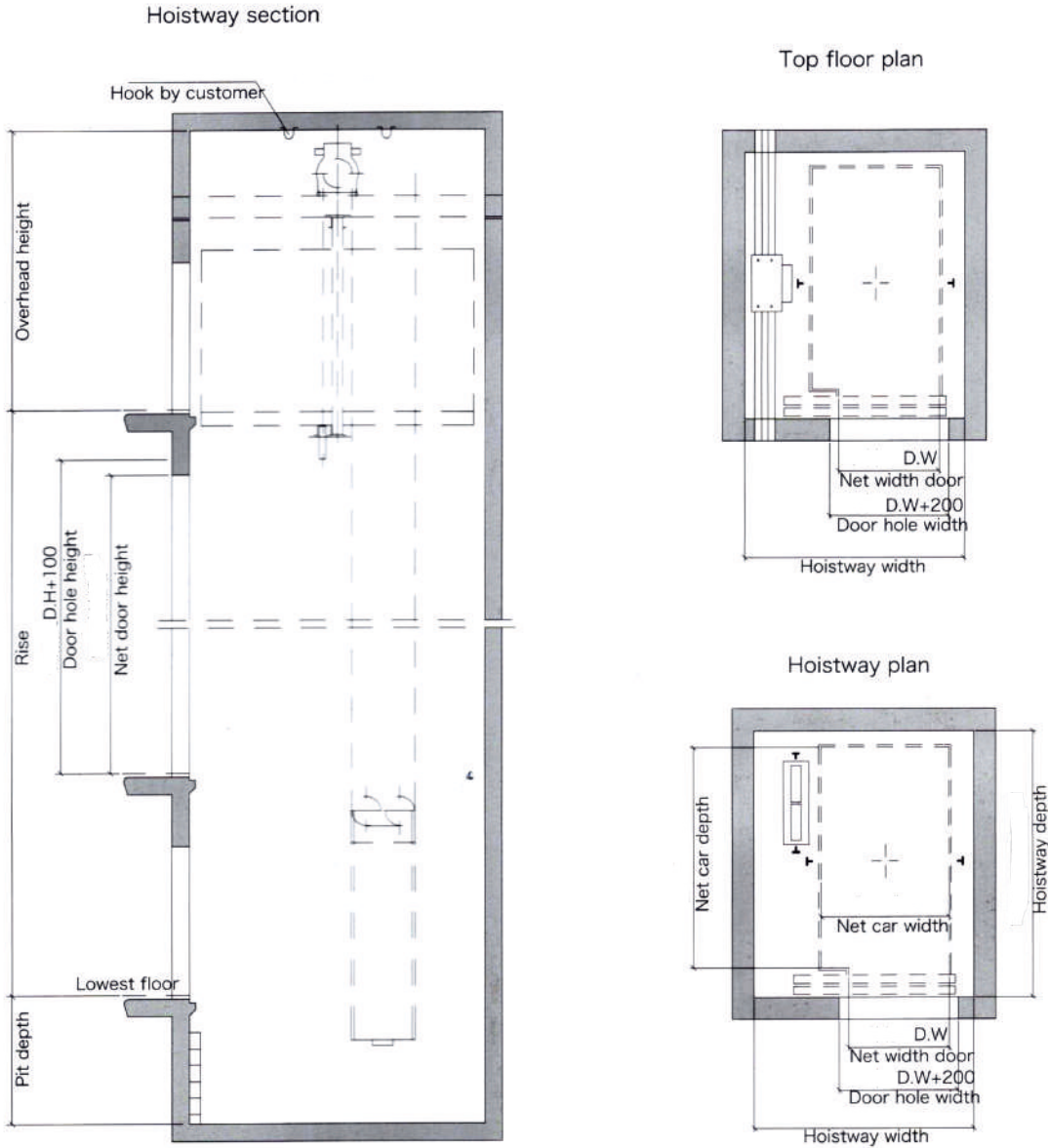
ACRON elevator leads industrial grading of traditional elevator, rebuilds new industrial shape with development of Internet information technology, promoting further integrated elevator industry.

Overturn brand

MAYFORD elevator implements comprehensively Internet + operation in Chinese and global market, overturn marketing brand recognition, providing for you with safer, more efficient and more comfortable elevator taking experience.



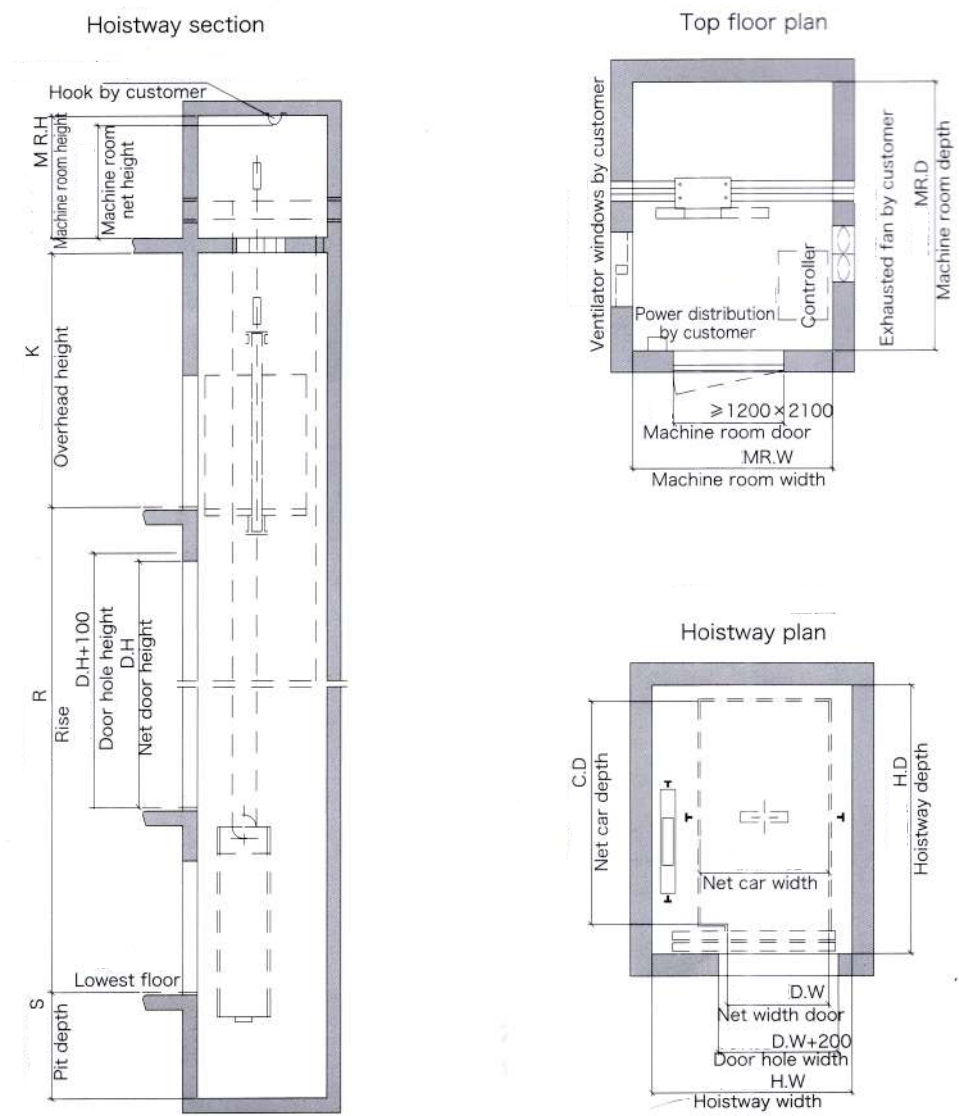
MACHINE ROOMLESS BED ELEVATOR CONSTRUCTION PARAMETER



(kg)		1600kg		
Loading capacity				
(m/s)		1.0	1.5	1.75
Rated speed				
(mm)		1100		
Door opening size				
(mm) Car size	Width	1400		
	Depth	2400		
	Height	2400		
(mm) Hoistway size	Width	2400		
	Depth	3050		
(mm)		4500	4600	4600
Top floor height				
(mm)		1700	1800	1800
Pit depth				
(m)		60	75	90
Max.travelling height				

Note: Only for reference, final manufacture please follow contract.

SMALL MACHINE ROOM BED ELEVATOR CONSTRUCTION PARAMETER



(kg) Loading Capacity		1600kg		
(m/s) Rated speed		1.0	1.5	1.75
(mm) Door opening size		1100		
(mm) Car size	Width	1400		
	Depth	2400		
	Height	2400		
(mm) Hoistway size	Width	2250		
	Depth	3050		
(mm) Machine room size	Width	2250		
	Depth	3050		
	Height	2200		
(mm) Top floor height		4500	4600	4700
(mm) Pit depth		1400	1500	1600
(m) Max. travelling height		60	75	90

Note : Only for reference, final manufacture please follow contract.



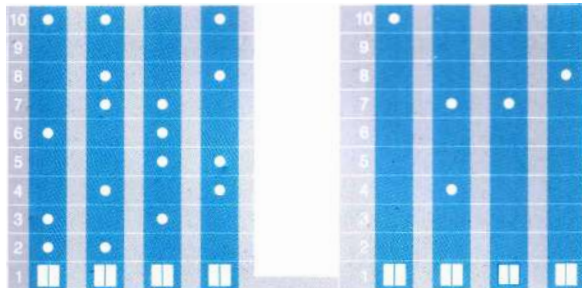
INTERNET TECHNOLOGY

ACRON adopts advanced sensor technology to collect real-time operation data of elevator, and makes data analysis, modeling and professional trouble database through micro processor By using GPRS-GSM communication pattern to transmit data to monitoring center the comprehensive elevator management platform is realized with functions like elevator malfunction fault alarm, rescxie, daily managemant, quality evaluation, risk prevention, risk evaluation, benchmarking system and energy technology

BRAND NEW ELEVATOR INTELLIGENT OPERATION SYSTEM

Group control elevator dispatching system

It is the concentrated control of the multiple-computers. The system uses the finest calculation to dapatch the most prompt, economical and reasonable lift to respond to the calling signal in the proper time it greatly enhances the ift transport efficiency, reducee the waiting period of the passengers and saves the electric energy



Traditional elevator

ACRON elevator

Access card system (id identification)

Access carti system controls the elevator use. Only the holders of ID/IC Cards can use the elevators greatly strengthens the security of the building management so that the users can be rest assured in using the elevators

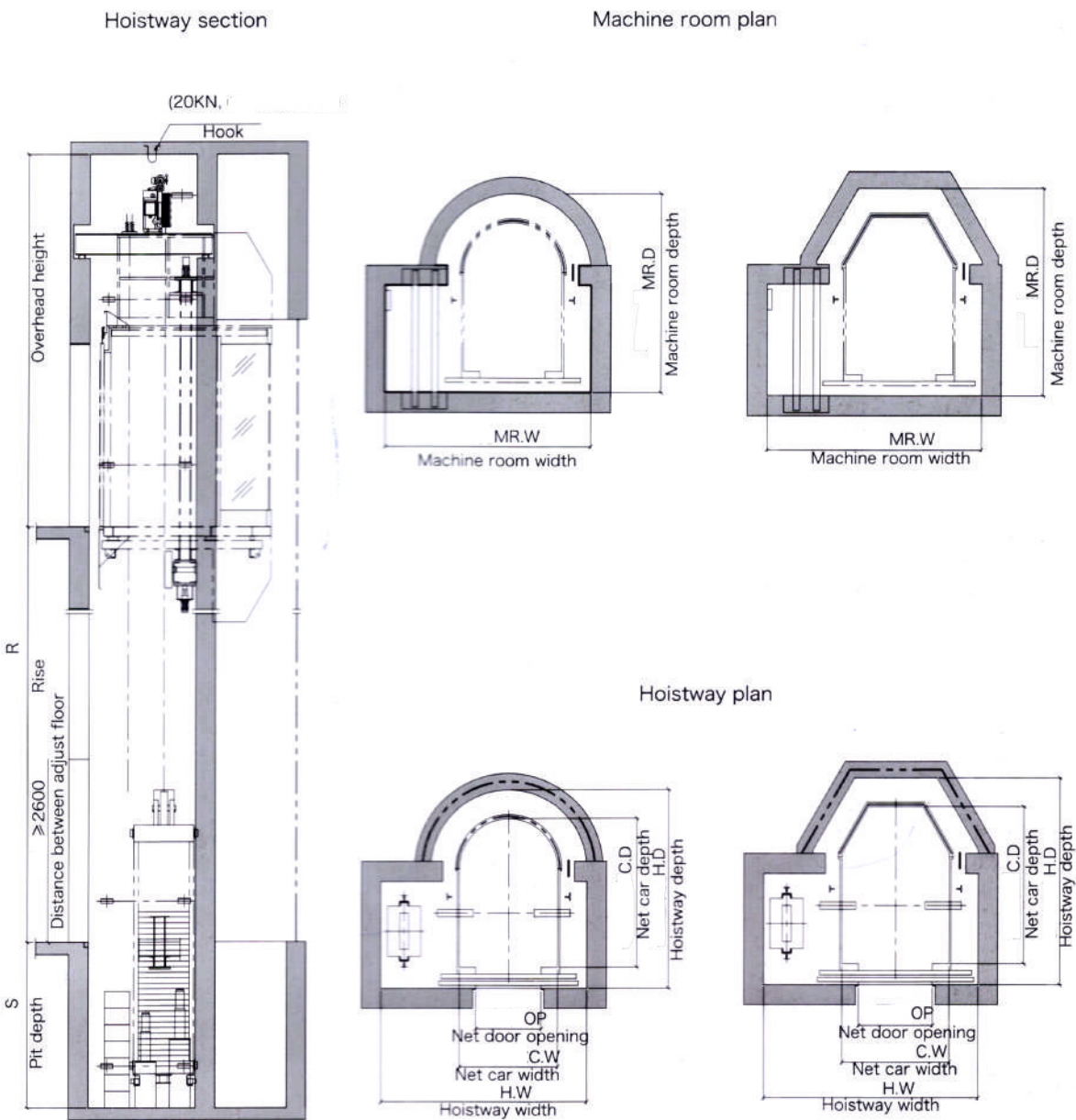


Light curtain protection system

Form light curtain barrier at the gate of elevator with 194 infrared rays protection, making flexible maction to any people or objects entering into detection scope, achieving high level of safety



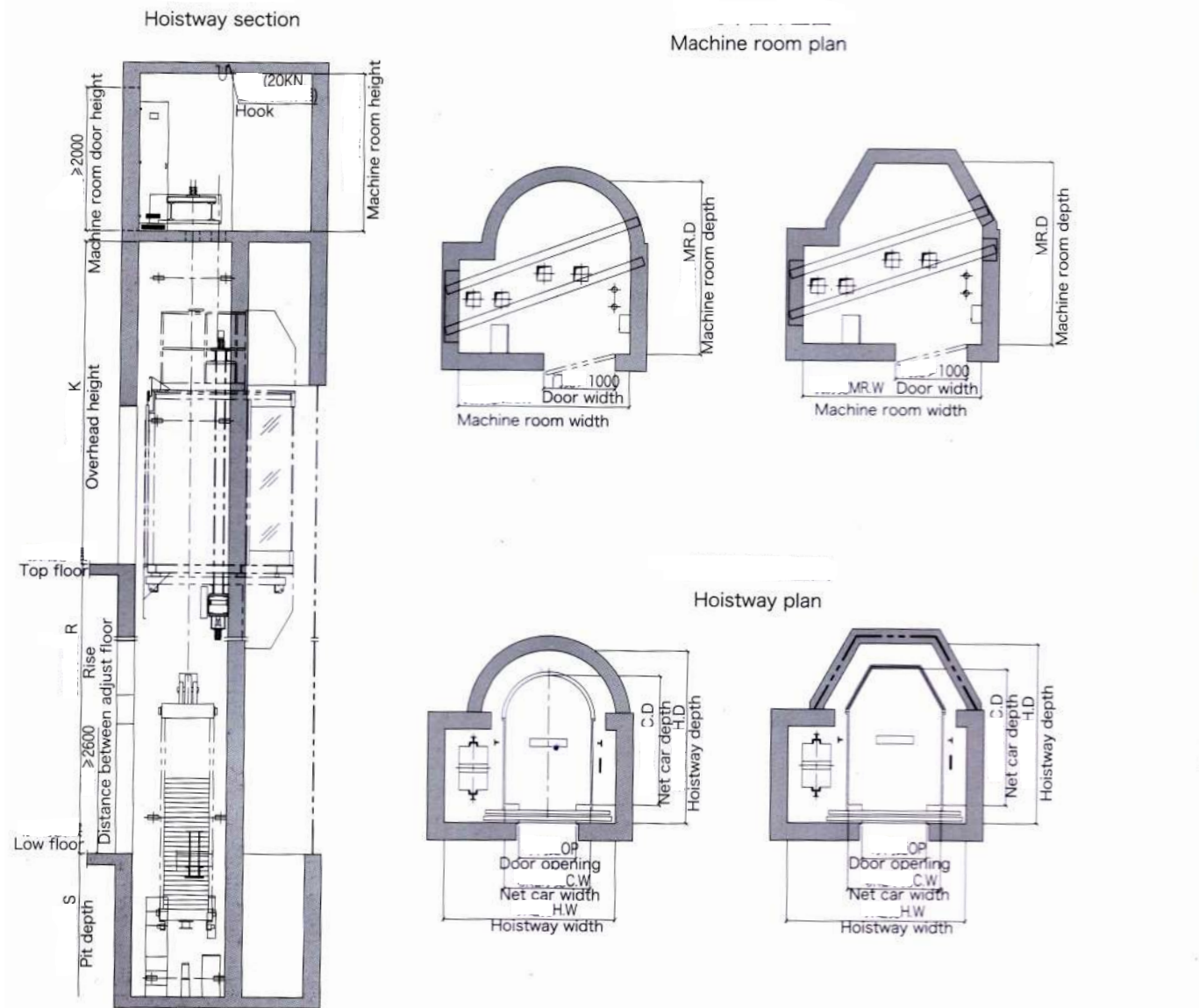
MACHINE ROOMLESS PANAORAMIC ELEVATOR CONSTRUCTION PARAMETER



Loading capacity (Passengers)		630kg (8人 Passengers)			800kg(10人 Passengers)			1000kg(13人 Passengers)			1250kg (16人 Passengers)		
(m/s) Rated speed		1.00	1.50	1.75	1.00	1.50	1.75	1.00	1.50	1.75	1.00	1.50	1.75
(mm) Door opening size		800			800			900			1000		
(mm) Car size	Width	1100			1200			1300			1500		
	Depth	1600			1800			1900			2000		
	Height	2400			2400			2400			2400		
(mm) Hoistway size	Width	2400			2500			2600			2800		
	Depth	2200			2400			2500			2600		
(mm) Top floor height		4500	4600	4600	4500	4600	4600	4500	4600	4600	4500	4600	4600
(mm) Pit Depth		2000	2000	2000	2000	2000	2000	2000	2000	2000	2000	2000	2000
(m) Max. travelling height		60	75	90	60	75	90	60	75	90	60	75	90

Note: The construction parameters of half-round panorama lift and diamond panorama lift are the same. Please kindly contact our company for specific information. Above sizes are for design reference only. Regarding specific sizes, please take the construction layout drawing while signing the contract as criterion.

SMALL MACHINE ROOM PANORAMIC ELEVATOR CONSTRUCTION PARAMETER



(Λ) Loading Capacity (Passengers)		800kg(13Λ)			1000kg(13Λ)		
(m/s) Rated speed		1.00	1.50	1.75	1.00	1.50	1.75
(mm) Door opening size		800			900		
(mm) Car size	Width	1200			1300		
	Depth	1800			1900		
	Height	2400			2400		
(mm) Hoistway size	Width	2400			2500		
	Depth	2400			2500		
	Height	2400			2500		
(mm) Machine room size	Width	2400			2500		
	Depth	2400			2500		
	Height	2200			2200		
(mm) Top floor height		4500	4600	4600	4500	4600	4600
(mm) Pit depth		2000	2000	2000	2000	2000	2000
(m) Max. travelling height		60	75	90	60	75	90

Attention: semicircle observation elevator is with consistent parameter of rhombus observation elevator; contact with our company for specific information;

CORE TECHNOLOGY

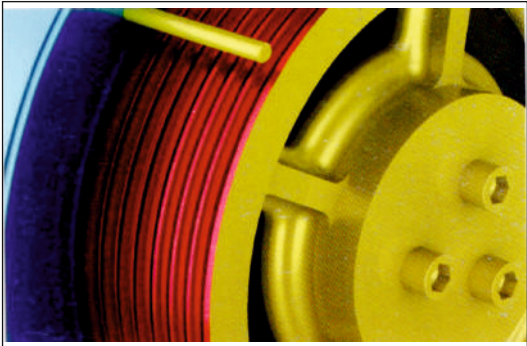
Integrated control system

With the world's most advanced permanent magnet synchronous drive technology and integrated intelligent comes train-side computer system to efficient energy-saving, environmental protection, space-saving, safe and comfortable, stable performance advantages such as to meet the full commercial building high-rise residential and other building needs. employing sex-oriented design create a new elevator space



Powerful source

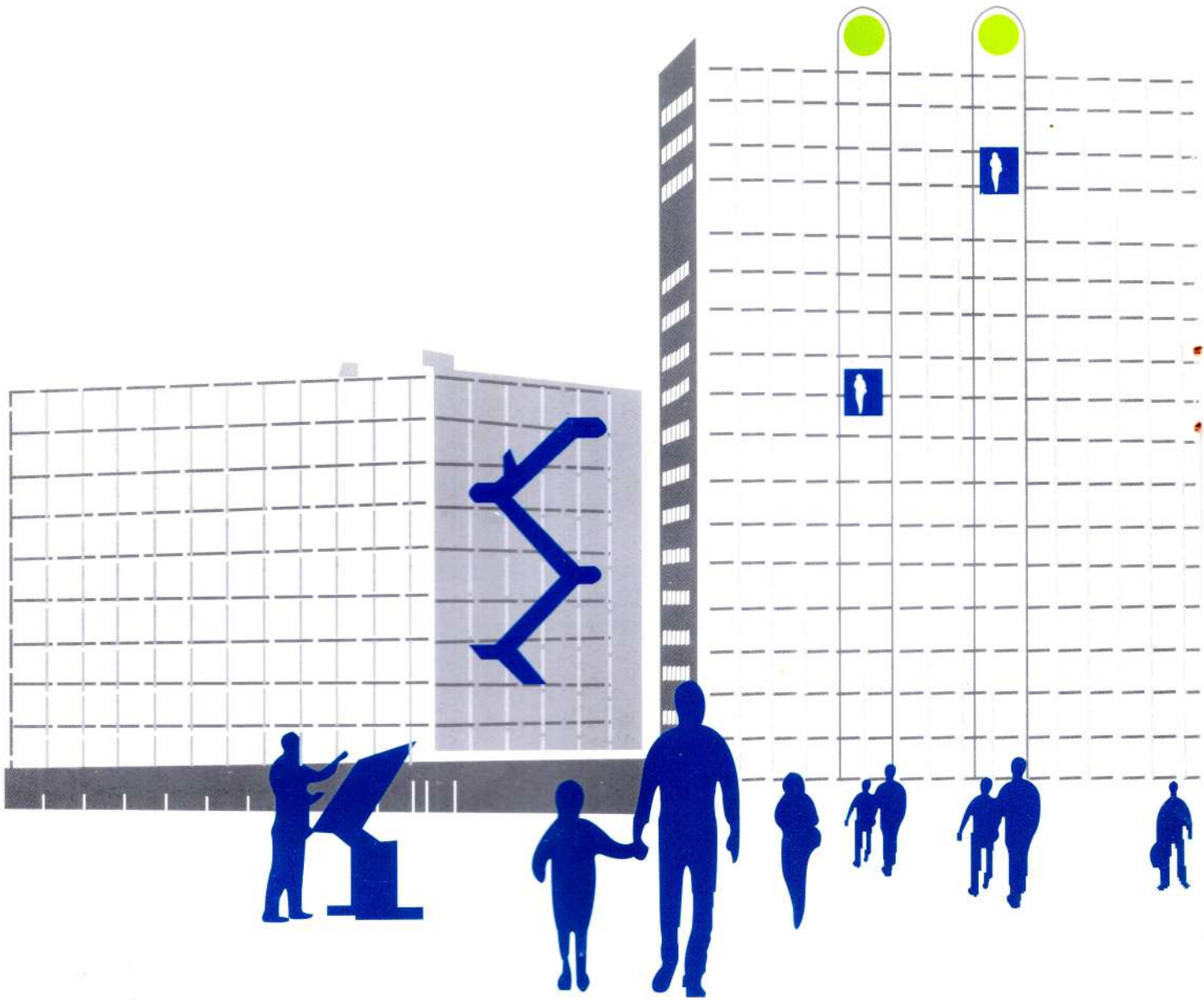
New generation of permanent magnetic gearless configured with imported highly precise sealed bearing with larger torque, high efficiency, and strong power. At the meantime, due to simultaneous use of high resolution UVW feedback coder and dragging system with high level of performance and low harmonic, the noise of elevator in operations greatly reduced, which is comfortable and silent



Precise and smooth opening and closing

Brand new frequency conversion door-motor system, dominated by mature frequency conversion technology, realize free adjustment over opening and closing of door, all-computer VVVF closed-loop control pattern realizes stable operation with no need for any location switches.



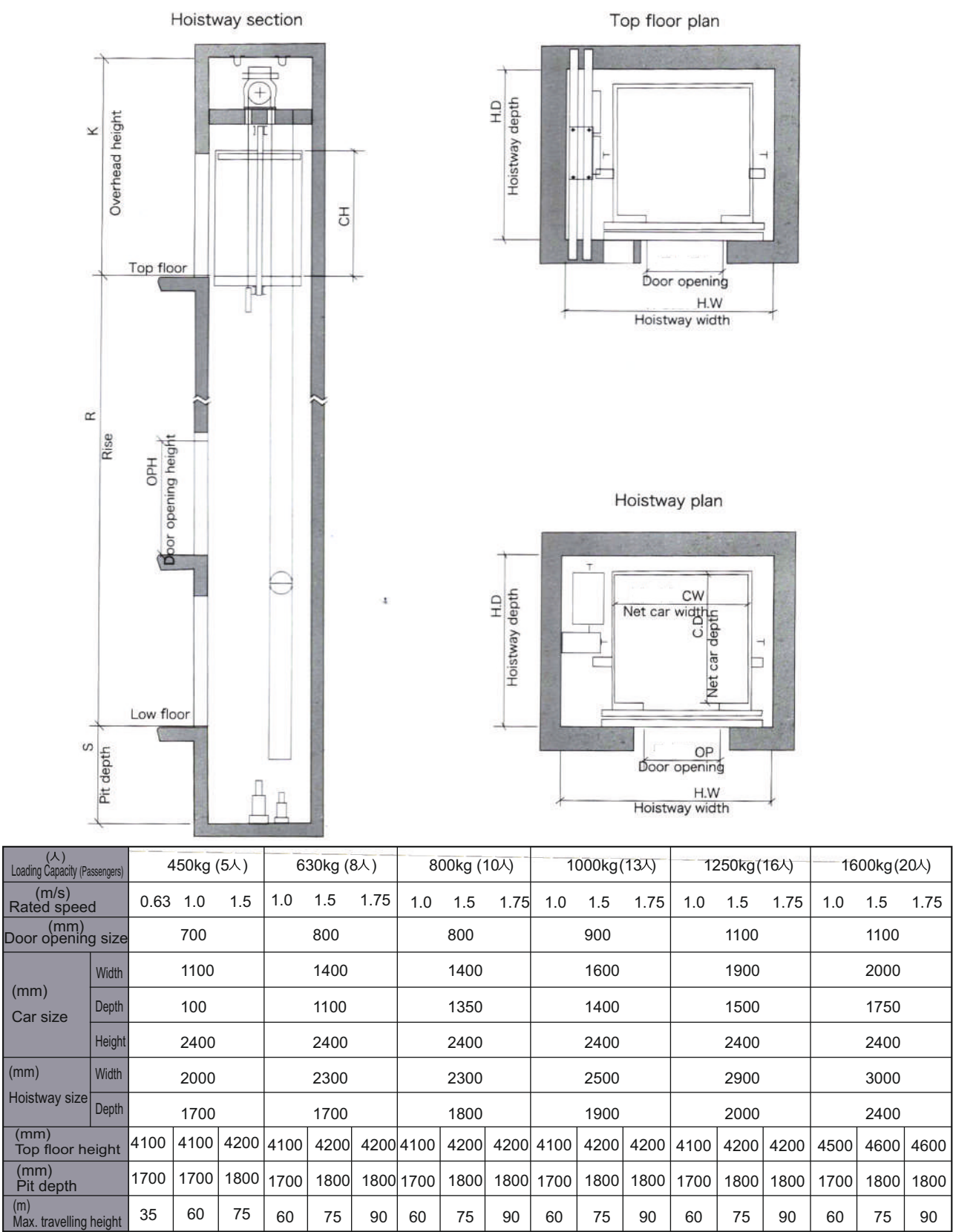


**SMALL MACHINE ROOM
PASSENGER ELEVATOR
(STRETCHER ELEVATOR)**

ACRON small machine room passenger elevator applies the rational construction layout Machine room is about the same as the well size I effectively saves the occupation rate of machine room space Small machine room chesigri grants the elevator to more easily merge with the building. It greatly reduces the restrictions of the building outline design, It reduces the building space cost. What is more, it inspires infinite creativity of the building designers.

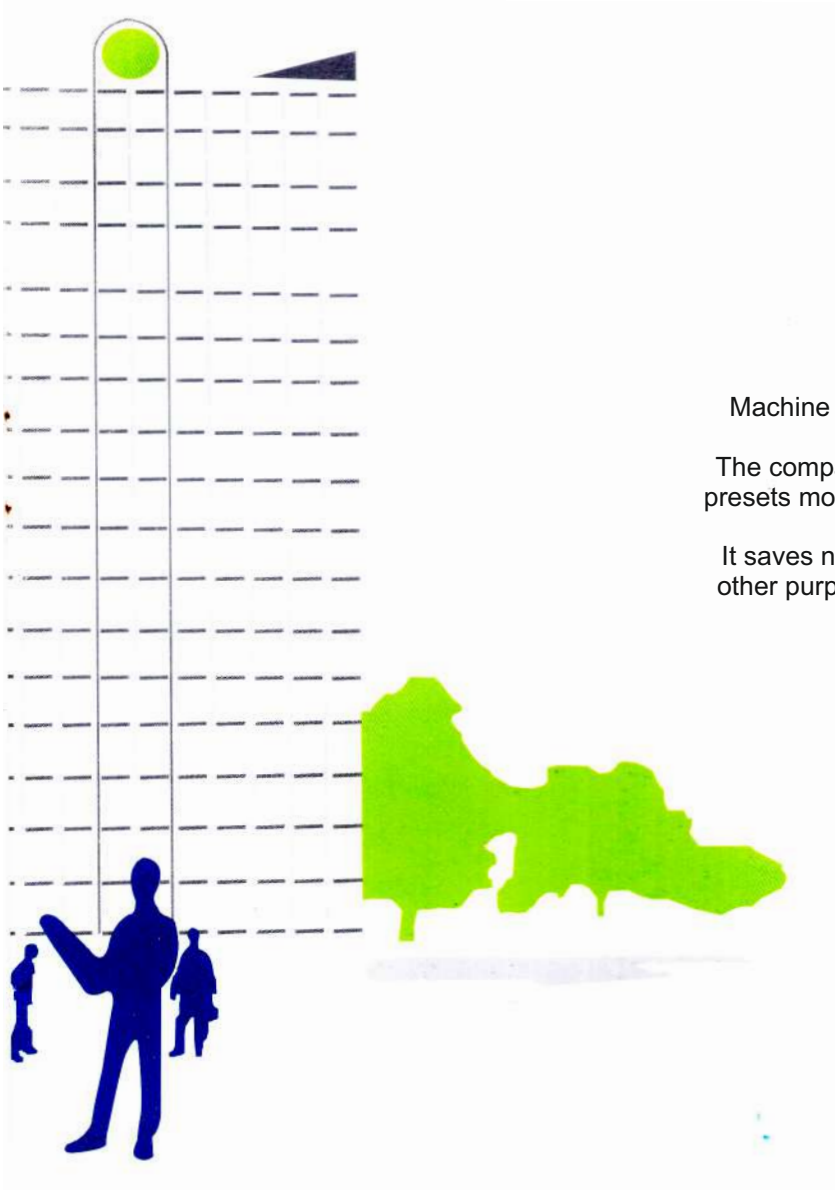
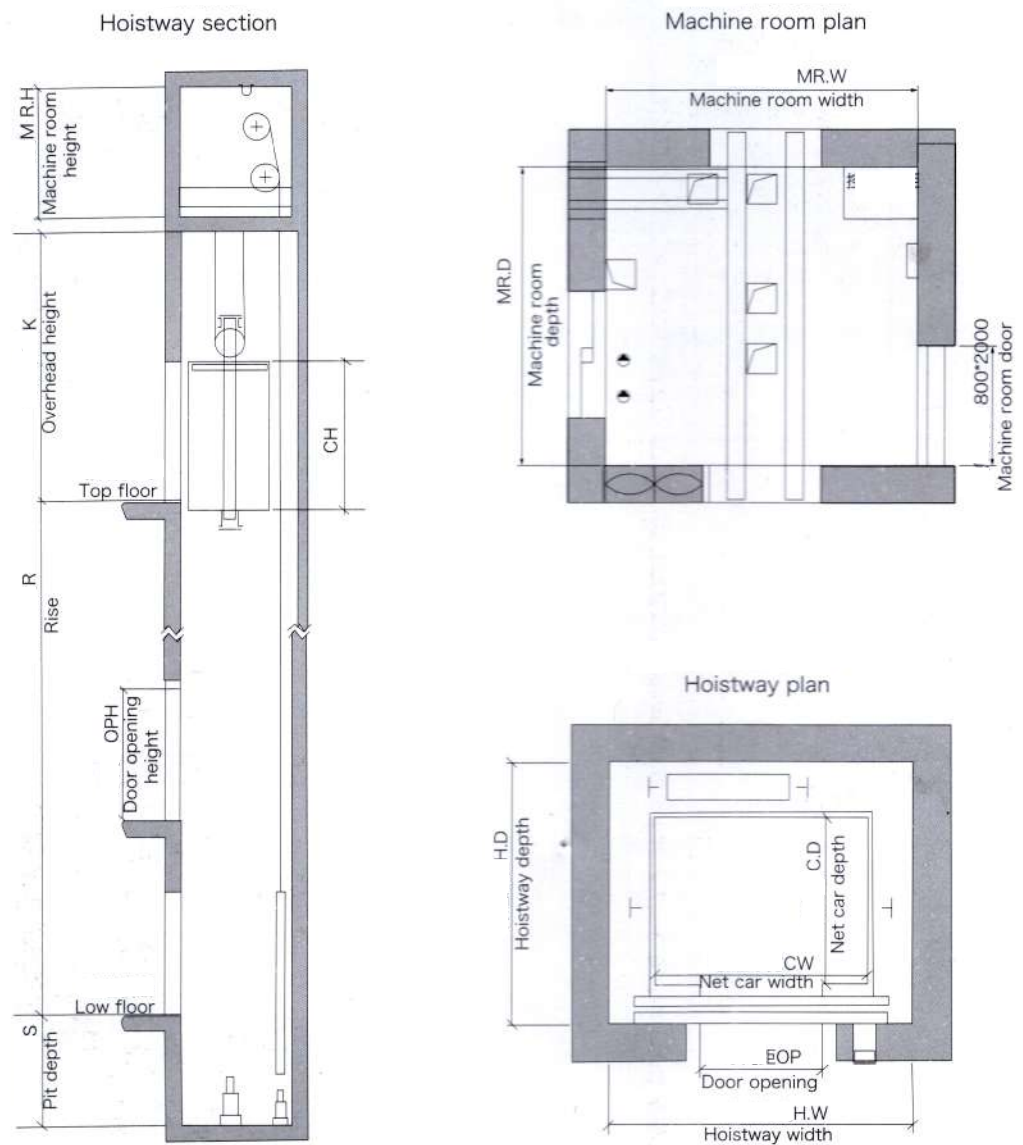
The small machine room elevator of ACRON specially designed house (stretcher) elevator, which is convenient for entry and exit of stretchers and the transport of patients, and opening up green passageway.

**MACHINE ROOMLESS
PASSENGER ELEVATOR
CONSTRUCTION PARAMETER**



Note : Only for reference, final manufacture please follow contract.

SMALL MACHINE ROOM PASSENGER
ELEVATOR CONSTRUCTION PARAMETER



The space advantages are beyond
your imaginations

Machine room is only an extension of the well, it does not affect
the building space design

The compact permanent magnet synchronous and gearless host
presets more and more spaces for machine room, it is convenient
in instalation

It saves nearly half of machine room area which can be used for
other purposes, therefore the building is endowed with more and
more space values.

(人) Loading Capacity (Passengers)		450kg (5人)			630kg (8人)				800kg (10人)					1000kg (13人)					1250kg (16人)					1600kg (20人)				
(m/s) Rated speed		0.63	1.0	1.5	0.63	1.0	1.5	1.75	1.0	1.5	1.75	2.0	2.5	1.0	1.5	1.75	2.0	2.5	1.0	1.5	1.75	2.0	2.5	1.0	1.5	1.75	2.0	2.5
(mm) Door opening size		700			800				800					900					1100					1100				
(mm) Car size	Width	1100			1400				1400					1600					1900					2000				
	Depth	1100			1100				1350					1400					1500					1750				
	Height	2400			2400				2400					2400					2400					2400				
(mm) Hoistway size	Width	1600			1900				1900		2000		2100	2200		2400		2500	2500		2500		2600	2500		2600		
	Depth	1700			1700				1950		2450		2000	2200		2200		2400	2450		2450		2650					
(mm) Machine room size	Width	1600			1900				1900				2100	2400		2400		2500		2500		2500		2600				
	Depth	1700			1700				1950				2000	2200		2200		2400		2450		2450						
	Height	2200			2200				2200		2500		2200	2500		2200		2500	2200		2500		2200		2500			
(mm) Top floor height		4400	4500	4600	4400	4500	4600	4700	4500	4600	4700	4900	5100	4400	4600	4600	4850	5100	4500	4600	4700	4900	5100	4500	4600	4700	4900	5100
(mm) Pit depth		1400	1400	1500	1400	1400	1500	1600	1400	1500	1600	1700	1900	1400	1500	1600	1700	1900	1400	1500	1600	1700	1900	1400	1500	1600	1700	1900
(m) Max. travelling height		35	60	75	35	60	75	90	60	75	90	100	120	60	75	90	100	120	60	75	90	100	120	60	75	90	100	120

Note : Only for reference, final manufacture please follow contract.

The area of the machine room is consistent with that of
the shaft, effectively save machine room's area

Energy-efficient: The starting current of the main engine is small
the transmission is efficient and energy saving, the cost of the
elevator is decreased for daily use.

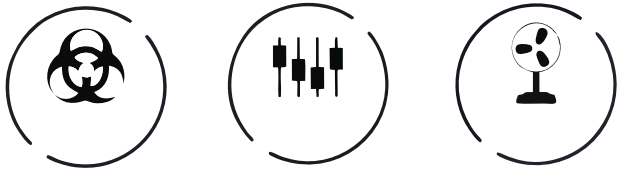
Simple and easy maintenance Change the traditional machine
room's fixed mode, update flexibly, ropiace easily.





Small but delicacy outside. Aesthetic space inside, Outstanding performance presented.

MACHINE ROOMLESS PASSENGER ELEVATOR



The passenger elevator without machine roon of ACRON integrates the control cabinet and drive system in the hoistway to free up the machine room space completely and make the architectural design more flexible it is applied to the high-rise, small high-rise residence, business building, hotel and other places with the higher requirements for civil construction



Standard function

Function name	Function elucidation
Emergency car lighting	Emergency car lighting automatically activated once power failure.
Inching running	When the lift enters into emergency electric operation, the car travels at low speed inching running.
Five way intercom	Communication amid car, car top, lift machine room, well pit and rescue duty room through walkie-talkie.
Bell	In emergency conditions, if bell button above car operation panel is continuously pressed, electric bell rings on top of the car.
Fire emergency return	If you start key switch in main landing or monitor screen, all the callings will be cancelled. The lift directly and immediately drives to the designated rescue landing and automatically opens the door.
Car ventilation, light automatic shut off	If there is no calling or command signal within the stipulated time, the car fan and lighting will be automatically closed in order to save the energy.
Remote shut-off	The lift can be called to main landing (after finishing the service) through the key switch and automatically exists the service

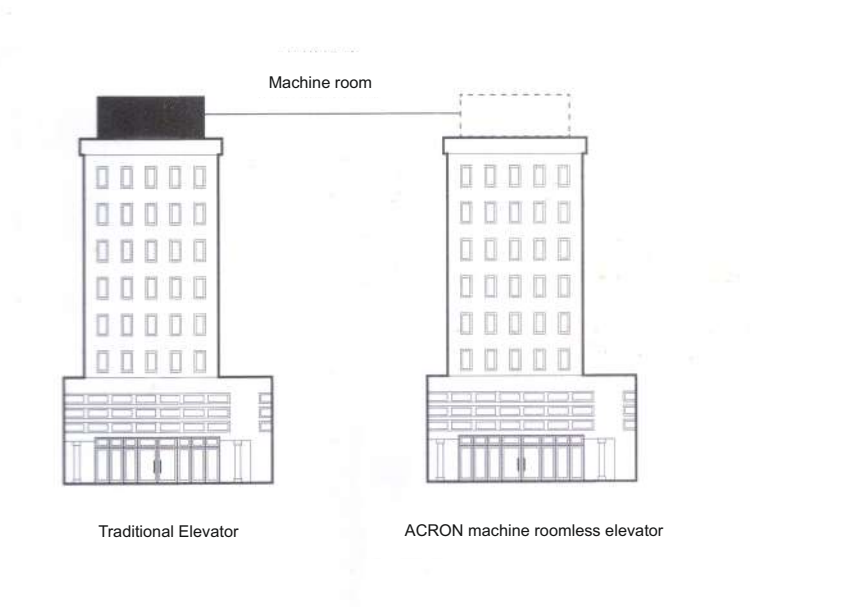
Optional function

Function name	Function elucidation
Leveling when power failure	In normal power failure, the chargeable battery supplies the lift power. The lift drives to the nearest landing.
Anti-nuisance	In the light lift load, when three more commands appear, in order to avoid the unnecessary parking, all the registered callings in the car will be cancelled
Open the door in advance	When the lift decelerates and enters into door open zone, it automatically opens the door to enhance the travel efficiency.
Group control	When three or more same model lift groups are controlled in use, the lift group can automatically choose the most appropriate response. It avoids the repeated lift parking, reduces the passengers waiting time and increases the travel efficiency.
Duplex control	Two sets of same model lifts can unanimously respond the calling signal through the computer dispatch. In this way, it reduces the passengers waiting time to the greatest extent and enhances the travel efficiency as well.
On-duty peak service	Within the preset on-duty time, upward transport from the home landing is extremely busy. The lifts are continuously dispatched to the home landing in order to satisfy on-duty peak service.
Off-duty peak service	Within the preset off-duty period, the lifts are continuously dispatched to top floor in order to satisfy off-duty peak service.
Door open time extending	Press special button in the car, the lift door keeps open for certain period of time.
Car arrival gong	Arrival tong in the car top announces that the passengers arrive.
Voice announcer	When the lift normally arrives, voice announcer informs the passengers about the relevant information
Car assistant operation box	It is used in the large loading weight lifts or the lifts with crowded passengers so that more and more passengers can use the car.
Operation box for the handicapped	It is convenient for the wheelchair passengers and those who have vision problems.
Intelligent calling service	The car command or hoist-way calling can be locked or connected through special Intelligent Input.
IC card control function	All (partial) landings can only input car commands through IC Card after the authorization.
Remote monitor	The lift long-distance monitor and control can be fulfilled through modem and telephone. It is convenient for the factories and service units to timely know the travel conditions of every lift and promptly take the corresponding measures.
Remote Control	The lift can have independent travel according to the specific requirements through operation monitor screen (optional).
Camera function in the car	The camera is installed in the car to monitor the car conditions.

PERFECT FUNCTIONS

Standard function

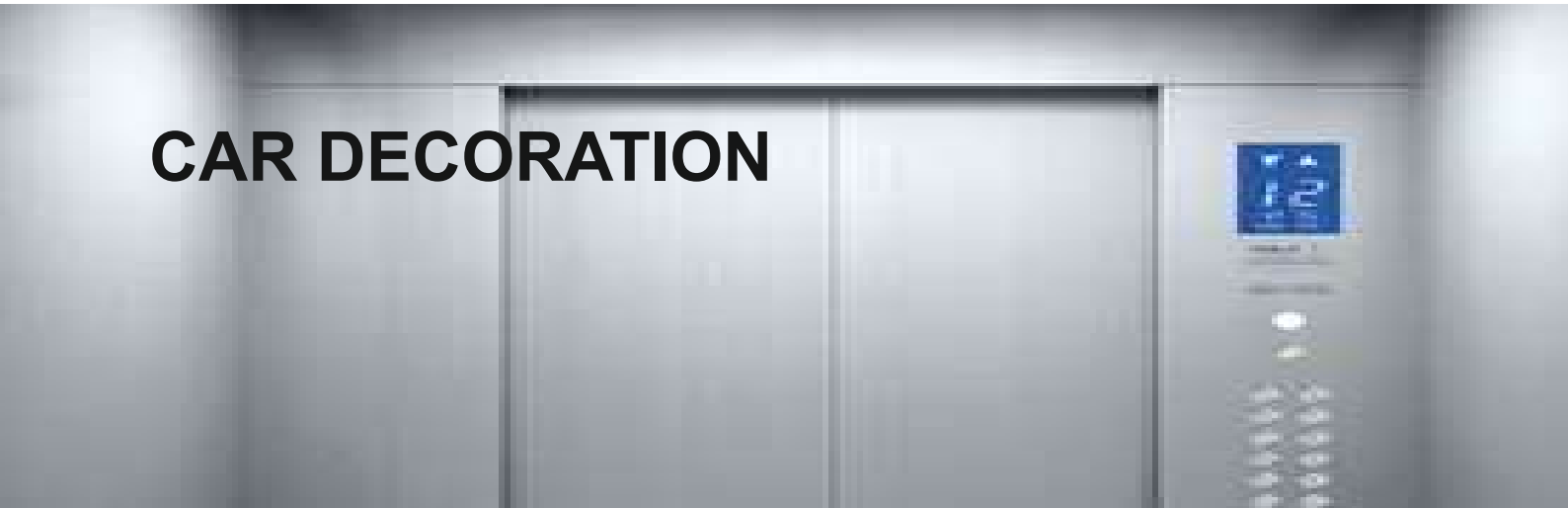
Function name	Function elucidation
VVVF drive	Motor rotating speed can be precisely adjusted to get smooth speed curve in lift start, travel and stop and gain the sound comfort
VVVF door operator	Motor rotating speed can be precisely adjusted to get the more gentle and sensitive door machine start/stop.
Independent running	<p>The lift can not respond to outer calling, but only respond to the command inside the car through the action switch.</p> <p>When the car is crowded with the passengers or the load is closeto preset value, the car will automatically pass the calling landing in order to keep maximum travel efficiency.</p>
Automatic pass without stop	
Automatically adjust door opening time	Door-open time can be automatically adjusted according to the difference between landing calling or car calling.
Reopen with hall call	In the door shutting process, press reopen with hall call button can restart the door.
Express door closing	When the lift stops and opens the door, press door-shut button, the door will be closed immediately.
Car stops and door open	The lift decelerates and levels, the door only opens after the lift comes to a complete stop.
Command register cancel	If registered command. you press the wrong floor command button in the car, twice continuous pressing of same button can cancel the
Direct parking	It completely accords with distance principle with no crawling in the leveling. It greatly enhances the travel efficiency.
Photocell protection	In the door open and shut period, infraredelight that covers the whole door height is used to probe the door protection device of both the passengers and objects.
Designated stop	If the lift can not open the door in the destination floor out of some reason, the lift will close the door and travel to the next designated floor.
Overload holding stop	When the car is overload, the buzzer rings and stops the lift in the same floor.
Anti-stall timer protection	The lift stops operation due to slippery traction wire rope.
Start protection control	If the lift does not leave door zone within the designated time after it gets started, it will stop the operation.
Inspection operation	When the lift enters into inspection operation, the car travels at inching running.
Fault self-diagnosis	The controller can record 62 latest troubles so as to quickly remove the trouble and restore the lift operation.
Repeated door closing	If the lift can not close the door due to certain obstacle or interference, the lift will reopen or re-shut the door until sundries are eliminated.
Up/down over-run and final limit protection	The device can effectively prevent from the lift's surging to the top or knocking the bottom when it is out of the control. It results in the more safe and reliable lift travel.
Down over-speed protection device	When the lift downs 1.2 times higher than the rated speed, this device will automatically cut off control mains, stop the motor running so as to stop lift down at over-speed. If the lift continues to down at over-speed, and the speed is 1.4 times higher than rated speed, safety tongs act to force the lift stop in order to ensure the safety.
Upward over-speed protection device	When the lift ups 1.2 times higher than rated speed, the device will automatically decelerate or brake the lift.
Micro-touch button for car call and hall call	Novel micro-touch button is used for operation panel command button in the car and landing calling button.
Floor and direction indicator inside car	The car shows the lift floor location and current travel direction.
Floor and direction indicator in hall	The landing shows the lift floor location and current travel direction.



Free up the space, and create infinite possibilities

The design of elestoy without machine room amplifies the architectura structure and improves the Lillion rate of floor space to meet the design mouinements of difliemens bolidinge Integrare the advanced drive Technology and control inchnology perfectly, with the features of smooth and costfortable running, stbration and noise reduction. The permanent synчиюпсия цвалевя powerful host can be driven directly wit higher efficiency and significant energy saving

CAR DECORATION



TFT LCD display

Out call



MF-LCD01
8.1 Inch



MF-LCD02
10.4 Inch



MF-WH01



MF-WH01A

Handrail series



MF-F01



MF-F02



MF-F03



MF-F04



MF-F05



MF-F06

Floor series



MF-DB01



MF-DB02



MF-DB03



MF-DB04

MF-K001

Standard Configuration

Celling: Luxury minor stainless steel, LED light decoration

Car wal: Hairline stainless steel

Car door: Hairting stainless steel

Floor: PVC floor

COP: Luxunous integration

Hall caling: Integrated external caling without base box



DECORATION CONFIGURATION

Landing door series



MF-TM001
Hainine stanless steel



MF-TM002
Painted steel plane



MF-TM003
Mirror stanless steel



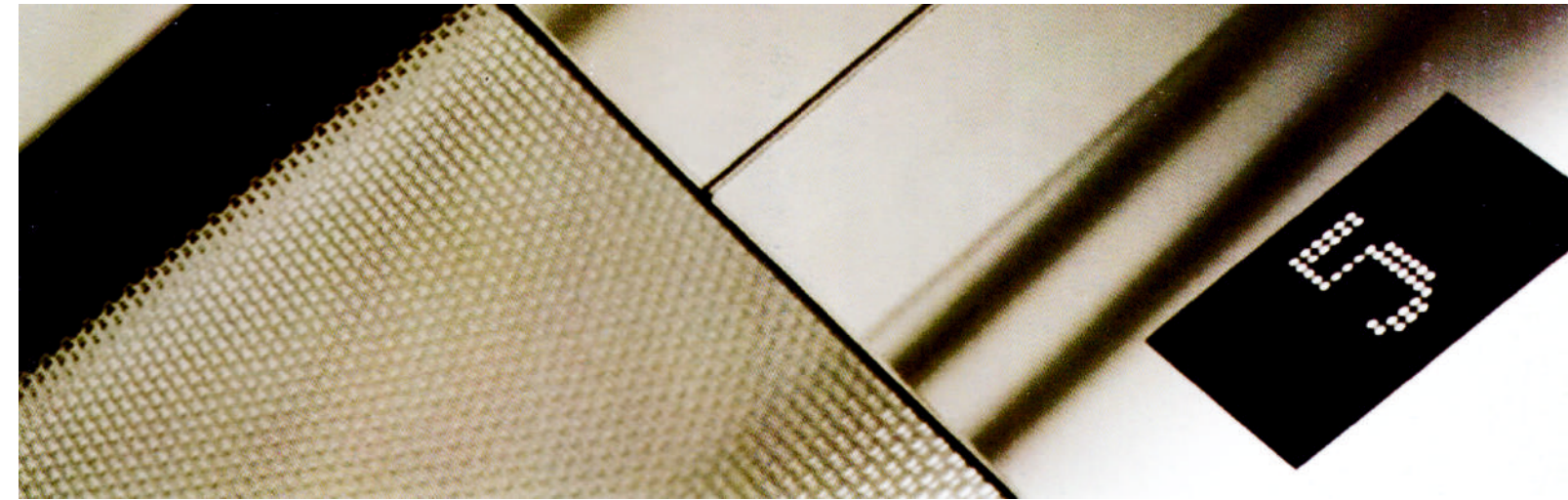
MF-TM004
Titanium, etching



MF-TM007
Titanium, mirror, elching



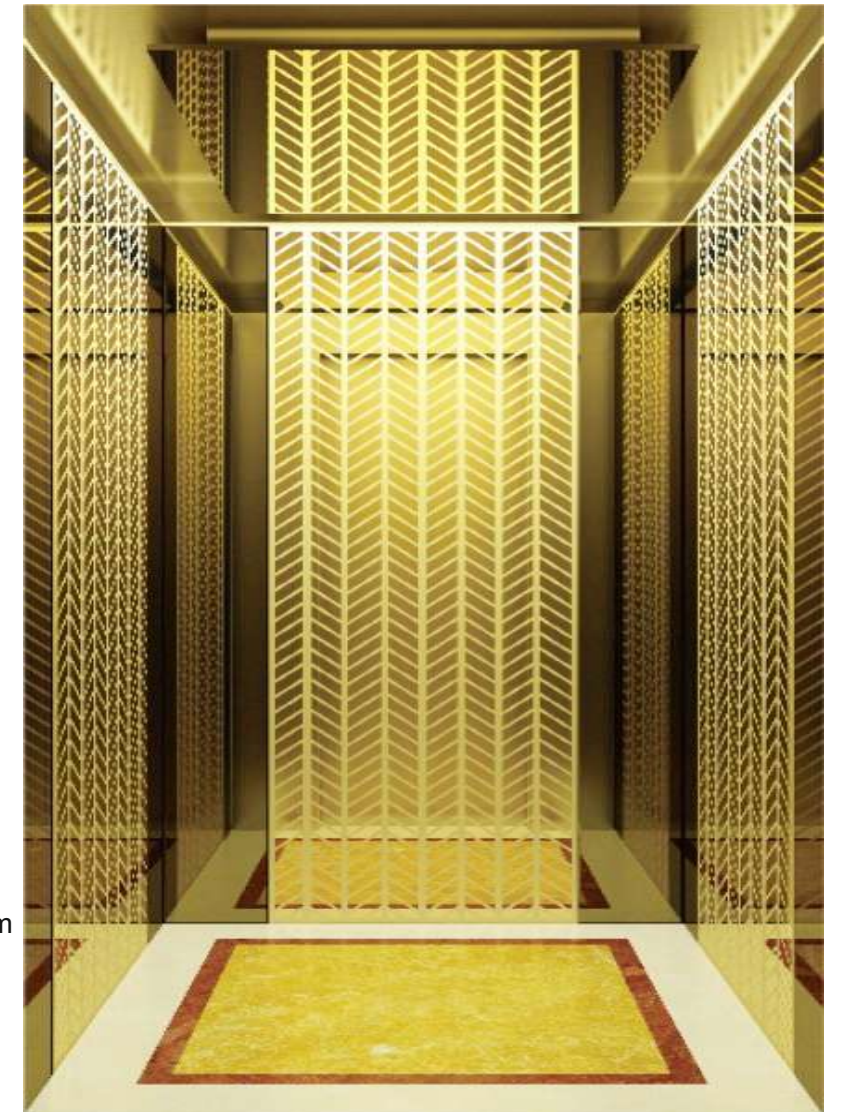
MF-TM008
Mirror, etching, rose golden



MF-K060

Optional Configuration

Ceiling: 8K mirror plane stainless frame with groove light area on both two sides
Car wall Etching combination between black titanium mirror surface and titanium mirror surface
Floor PVC floor



CAR DECORATION



MF-K061

Optional Configuration

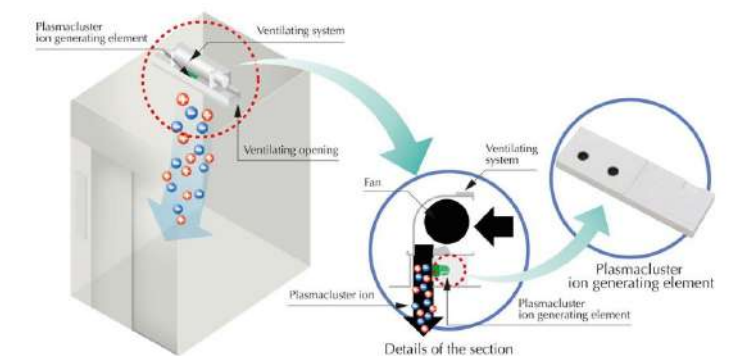
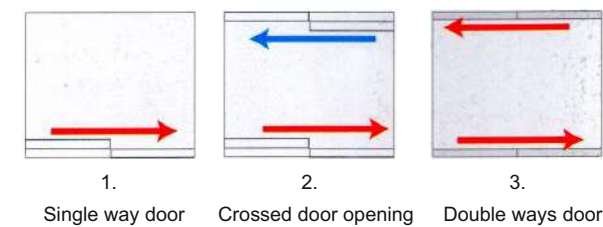
Ching Thanum mirror surface frame,
acrylic decorative lighting tune light
Car wall Thenium stairless steel titanium
mirror surface stamees steel
Handrail Titanium single tube round handel
Floor: PVC floor

A variety of ways to open the door

One-sided door opening in well, respective door opening
in front and behind well, connecting door opening,
matching flexibly to construction environment of hospital,
satisfying diversified demands

Warm environment, healthy and green way

Broad handrail, anion air purification inside lift car,
humanistic detail design life exclusive controller box
for the disabled, creating warm and comfortable
environment.



BED ELEVATOR

MAYFORD fully considers the specificity of bed elevator, complies with the strict requirements in the aspect of elevator driving, functional design, car design, handrail details and so on meticulously, and expresses the respect for the life from each design detail.

Disabled control box



MF-B001

Ceiling: Hairline stainless steel, highly efficient energy saving LED Car wall. Car door: Hairline stainless steel
Handrail: Stainless steel flat handrail
Floor: PVC floor

MF-K062

Optional Configuration

Ceiling Titanium minte surface stainless steel. spotlight lighting
Car wall Mirror surface etching stainless steel, wood grain marble decorative plane
Handrat: Unusual metal handrail
Flour: Wood grain marble ground





PANORAMIC ELEVATOR

MF-G002

Optional Configuration

Car cover: Painted steel plate, supplemented with decorative light bar
 Panoramic wall: Glue glass of safety clamp
 Decoration roof: Stainless steel frame, LED lights, acrylic lights
 Car wall: Hairline stainless steel
 Handrail: Stainless steel round tube
 Floor: PVC floor



MF-G001

Optional Configuration

Ceiling: Mirror stainless steel frame, top plate LED light
 Panoramic wall: Laminated glass
 Handrail: Stainless steel round tube
 Floor: PVC floor

MF-G003

Optional Configuration

Ceiling: Mirror stainless steel frame, top plate LED light
 Panoramic wall: Laminated glass
 Handrail: Stainless steel round tube
 Floor: PVC floor

